



Clearview Regional High School

Guidance Department

Junior Planning Group Meeting #1



Explore Your Interests

Plan Your Future

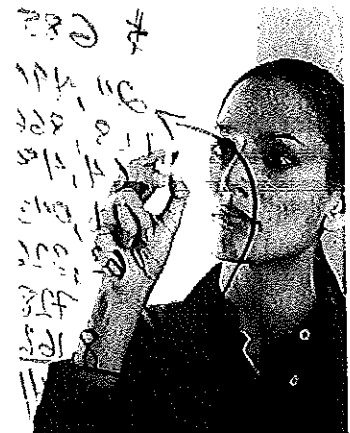
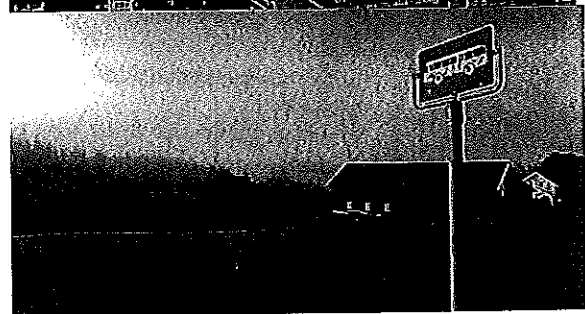
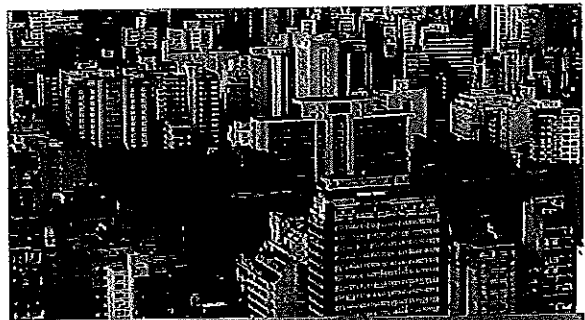
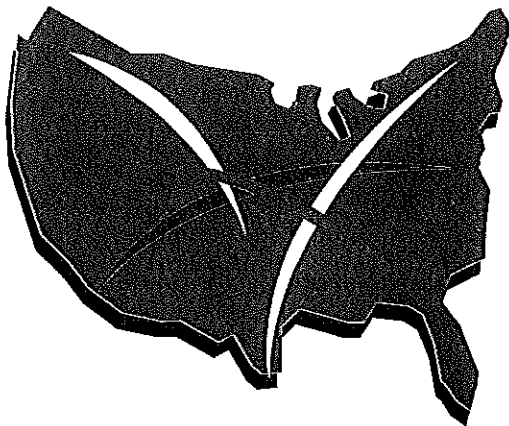
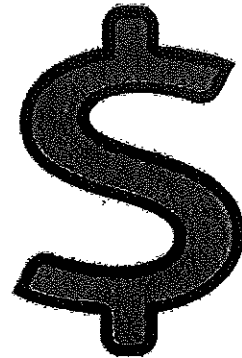
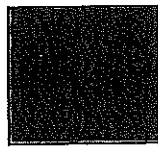
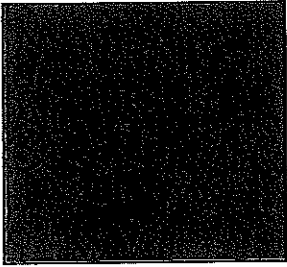
College Scavenger Hunt

Name: _____

(Each student's name may appear a maximum of twice in the scavenger hunt)

- * Find someone who has ever visited the University of Delaware _____
- * Find someone who wants to go into a medical profession _____
- * Find someone who is CERTAIN of the college he/she will be attending _____
- * Find someone who knows what FAFSA stands for _____
- * Find someone who has visited five or more colleges _____
- * Find someone who is UNCERTAIN of the college he/she will be attending _____
- * Find someone who wants to pursue engineering or architecture _____
- * Find the person who wants to travel the furthest for college _____
- * Find someone who is planning on applying to an Ivy league school _____
- * Find the person who is worried about having a bad roommate _____
- * Find the person who wants to go to law or medical school _____
- * Find someone who wants to continue playing a sport in college _____
- * Find someone who is planning on going to an in-state school _____
- * Find someone who currently has a brother or sister in college _____
- * Find someone who has a topic picked out for their college essay _____
- * Find someone who feels a lot of pressure to get into college _____
- * Find someone who wants to continue singing in college _____
- * Find someone who has already created a college resume _____

Factors to Consider in Choosing a College





CAMPUS VISIT CHECKLIST

SallieMae
Dream. Invest. Succeed.™

School visits beat pictures in brochures any day! If you have the opportunity, you should experience college life first-hand during your junior and senior years to be sure your home away from home will be the right one for you. Carefully plan each visit ... and limit the number of visits to just schools that are most important to you.

Planning the Visit

- Get a map of the campus.
- Plan at least a full day (and stay overnight, if possible) at each school.
- Visit when school is in session.
- Arrange an interview with an admissions officer or sign up for a group session, if available.
- Prepare a list of questions you have about the school.
- Get a notebook to record answers and your impressions.

What to Do

- Take a campus tour.
- Talk with students and faculty.
- Attend a sporting event, if possible.
- Check out what's important to you (e.g., dorms, libraries, student unions, athletic facilities).

What to Look For

- Watch how students spend their time: studying, partying, socializing, exercising ...
- Check out the size of the average dorm room and furniture provided.
- Look at what students have in their rooms and how they've arranged it.

What to Ask

- Are there active fraternities and sororities on campus?
- How good is the food in the dining facilities?
- Can you stay in the dorm for longer than freshman year? Can you have a single room or must you share? And if you're sharing, with how many others?
- What intercollegiate and intramural teams are represented on campus?
- What kinds of clubs and societies are represented on campus?
- How well are the campus and its facilities maintained?
- How safe is the campus? Where are the campus police located? Are there safety programs, such as escorts and emergency phone boxes, on campus?
- What's available off campus? Restaurants, theaters, museums, public libraries, job opportunities?

Sallie Mae is a registered service mark and Dream, Invest, Succeed, is a service mark of Sallie Mae, Inc. SLM Corporation and its subsidiaries, including Sallie Mae, Inc., are not sponsored by or agencies of the United States of America © 2009 Sallie Mae, Inc. All rights reserved. AD11364 07/09.

www.SallieMae.com

College Comparison Worksheet

ACT

COLLEGE COMPARISON WORKSHEET			
COLLEGE NAME			
SIZE/LOCATION -distance from home, enrollment Physical size of campus			
ENVIRONMENT -type of school (2 yr. or 4 yr.), school setting (urban, rural) -location and size of nearest city -co-ed, male, female -religious affiliation			
ADMISSION REQUIREMENTS -deadline -tests required, including Writing Test -average test scores, GPA, rank -notification			
ACADEMICS -your major offered -special requirements -accreditation -student-faculty ratio -typical class size			
COLLEGE EXPENSES -tuition, room, and board -estimated total budget -application fee, deposits			
FINANCIAL AID -deadline -required forms -percent receiving aid, scholarships			
HOUSING -residence hall requirement -food plan			
FACILITIES -academic, recreational, other			
ACTIVITIES -clubs, organizations, Greek life -Athletics, intramurals, other			
CAMPUS VISITS -when -special opportunities			

For Homework...

Please consult the websites below. These websites contain helpful college interest surveys.

NAVIANCE: <https://connection.naviance.com/family-connection/auth/login/?hsid=clearviewreg>

<https://bigfuture.collegeboard.org/college-search>

<http://www.petersons.com/college-search.aspx>

<http://nces.ed.gov/collegenavigator/>

<http://www.collegeview.com/collegesearch/index.jsp>

<http://cnsearch.collegenet.com/cgi-bin/CN/index>

<http://www.uscollegesearch.org/>

<http://colleges.usnews.rankingsandreviews.com/best-colleges>

http://www.nj.gov/highereducation/Program_Inventory/index.html

The results will give you a list of approximately 20-60 schools that may be a good match for you.

You are encouraged to take 2 or more surveys. Each survey takes approximately 15-30 minutes.

A small investment of your time will provide you with valuable information to help your planning.